

# Mounting Kit

Manual MKI-XXX-XX



## Description

The MKI mounting kits are designed for a fast user experience of our sensor technologies. They are designed to be used for prototyping and try out not for serial usage.




With the kit, several mounting options are addressed. Please read the following manual for more details.


## Scope of Delivery



- Screws: 2x M4x22, 2x M4x14, 4x Washers
- 8x cable ties, 4x adhesive strips
- Velcro strips: 2x 200 mm, 2x 300 mm
- 4 pairs of mounting adapters

## Order Code

	MKI	-	DST	-	IE
Type					
 MKI	Mounting Kit				
Sensor Series					
 DST	for strain sensor DST				
..	...				
Variant					
 IE	Industrial Experience				

 Core Product Range

## Application DST strain sensor

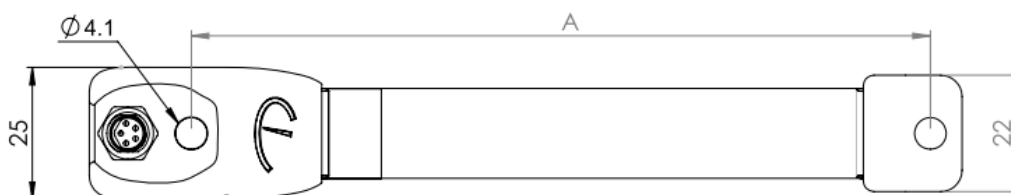
The DST strain sensors always use a fixed end (marked F) and a loose end (marked L):



All mounting adapters are accordingly marked with F/L.

The different mounting options are:

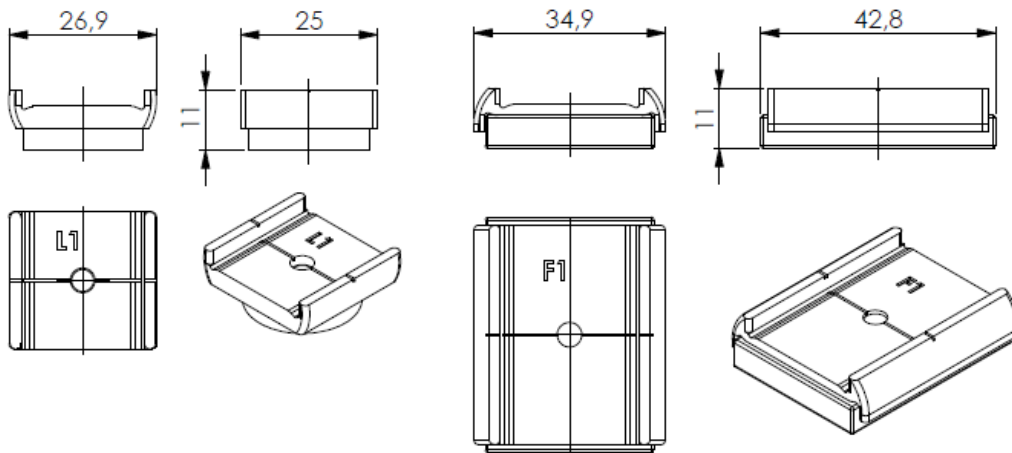
- Magnetic mounting: for magnetic materials like iron bars
- Glue on mounting: for even surfaces
- Velcro: for pipes, profiles and many more
- Cable ties: for drag chain, ropes and many more



The mounting distance 'A' of both sensor ends need to be at defined values (cf. datasheet) to assure the whole measurement range of the sensor to be usable. For easier application, use the middle lines as marked on the mounting adapters to align the adapters in your application. The distance between the lines should be:

Sensor typ.	Mode 0...100% [mm] (full stroke)	Mode +/-50% [mm] (center position)
DST-S1M4-025	66,5	79
DST-S1M4-050	93	118
DST-S1M4-100	145	195

## Magnetic mounting



The parts for the magnetic mounting kit are marked with the suffix “1”. With this, the loose end is marked “L1”, the fix end is marked “F1”.

The magnets are surrounded with rubber to avoid damages of the surface and slippage. As these are strong magnets, please be careful when attaching not to damage your system.

For mounting the sensor using the “magnetic mounting” please follow these steps:

- 1.) Attach the fixed end adapter part (marked F) to your surface
- 2.) Fixed the loose end adapter (marked L) in the necessary distance



- 3.) Use the M4x22 screw with a washer to attach the fixed and to the adapter



- 4.) Use the M4x14 screw with a washer to attach the loose end to the adapter



# Mounting Kit

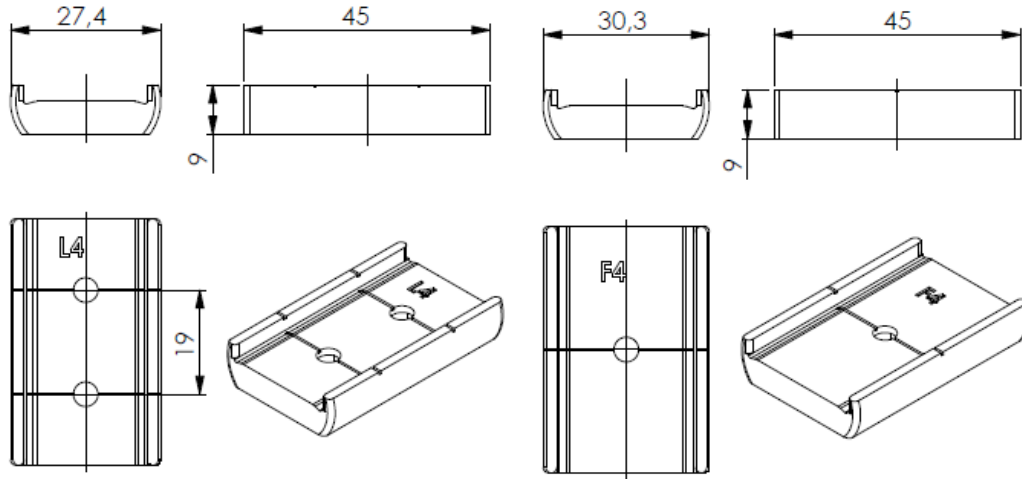
Manual MKI-XXX-XX

5.) Connect electrically and enjoy!



For further information on the usage of the DST Strain Sensor see the “Quick Start Guide DST” .

## Glue on mounting



The parts for the magnetic mounting kit are marked with the suffix “4”. With this, the loose end is marked “L4”, the fix end is marked “F4”.

As there are many different materials, included in the kit there are adhesive strips which are compatible to many of them. Please check for your material if they are applicable. Product details can be found online with the manufacturer and product number “Tesa 777600000520”. Also see the product page of the manufacturer for a detailed application description.

If you need a different gluing system, please make sure that this is compatible to the material of the adapter which is made from 3D printed ASA filament.

For mounting the sensor using the “glue on mounting” please follow these steps:

- 1.) Attach the adhesive strips to the adapter plates



# Mounting Kit

Manual MKI-XXX-XX

- 2.) Attach the fixed end adapter part (marked F) to your surface
- 3.) Fixed the loose end adapter (marked L) in the necessary distance



- 4.) Use the M4x22 screw to attach the fixed and to the adapter



- 5.) Use the M4x14 screw to attach the loose end to the adapter

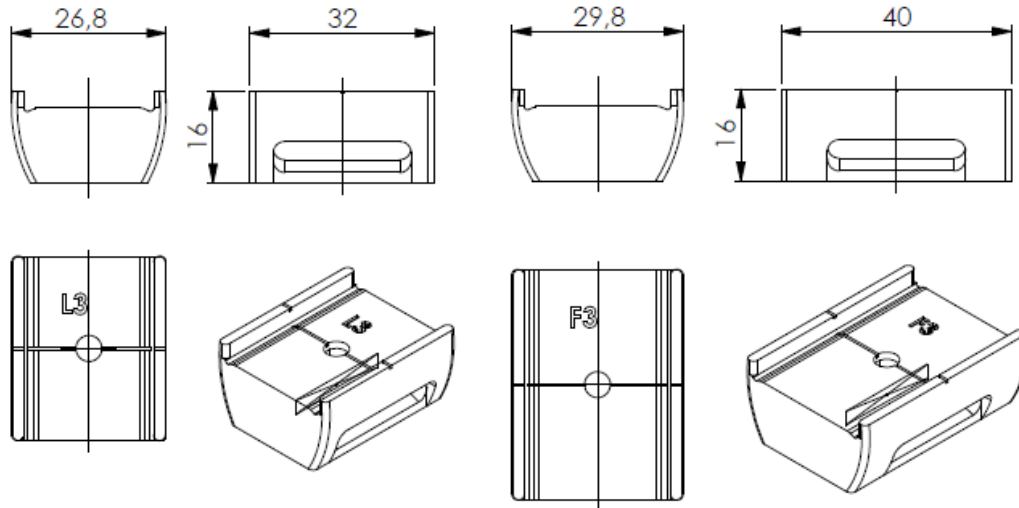


- 6.) Connect electrically and enjoy!



For further information on the usage of the DST Strain Sensor see the “Quick Start Guide DST” .

## Velcro mounting



The parts for the magnetic mounting kit are marked with the suffix “3”. With this, the loose end is marked “L3”, the fixed end is marked “F3”.

For mounting the sensor using the “Velcro mounting” please follow these steps:

- 1.) Attach the fixed end adapter part (marked F) to your surface using the Velcro tape



- 2.) Fixed the loose end adapter (marked L) in the necessary distance surface using the Velcro tape

- 3.) Use the M4x22 screw to attach the fixed and to the adapter



# Mounting Kit

Manual MKI-XXX-XX

- 4.) Use the M4x14 screw to attach the loose end to the adapter



- 5.) Connect electrically and enjoy!



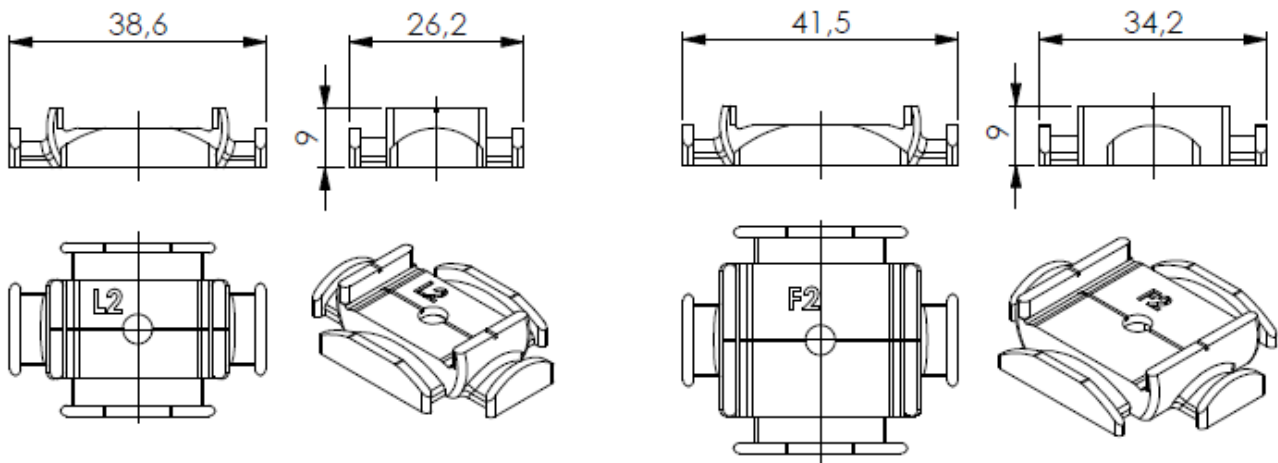
For further information on the usage of the DST Strain Sensor see the “Quick Start Guide DST” .



# Mounting Kit

Manual MKI-XXX-XX

## Cable tie mounting



The parts for the magnetic mounting kit are marked with the suffix “2”.

For mounting the sensor using the “Velcro / cable tie mounting” please follow these steps:

- 1.) Attach the fixed end adapter part (marked F) to your surface using cable ties



- 2.) Fixed the loose end adapter (marked L) in the necessary distance surface using cable ties
- 3.) Use the M4x22 screw to attach the fixed and to the adapter



# Mounting Kit

Manual MKI-XXX-XX

- 4.) Use the M4x14 screw to attach the loose end to the adapter



- 5.) Connect electrically and enjoy!

For further information on the usage of the DST Strain Sensor see the “Quick Start Guide DST”.